

Amakusa-Goshoura Geopark

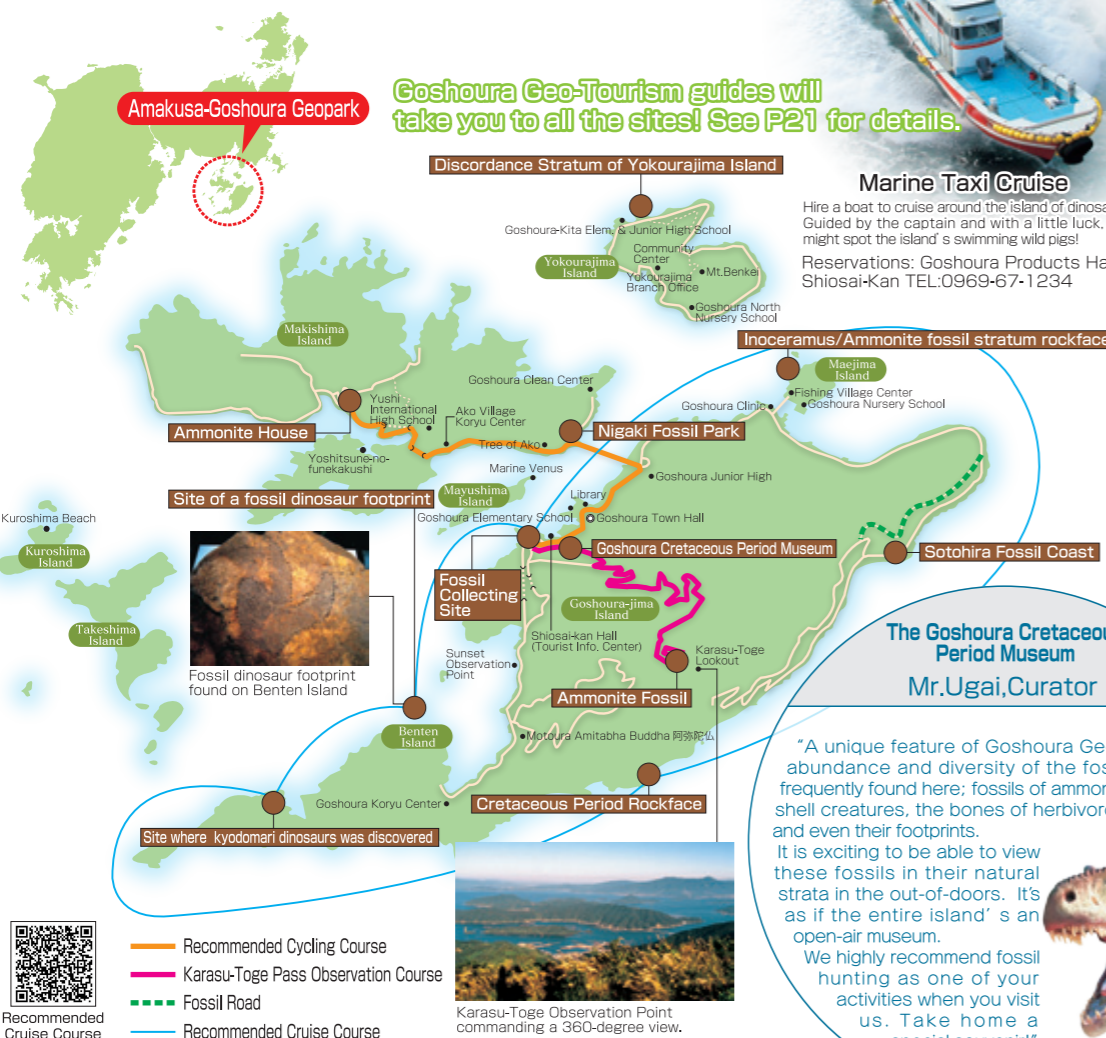
Travel back
one hundred million years in time
Feel the dynamic life
of the earth at Amakusa-Goshoura Geopark!

Amakusa-Goshoura became a member of the
Japanese Geopark Network in Oct. 2009

In Japan 14 regions have become members of the Japanese Geopark Network - four of which (as of Dec. 2010) are members of the Global Geopark Network which promotes these unique regions on the international stage. Amakusa-Goshoura became a member of the Japanese Geopark Network in October 2009.

Learn all about the ancient environments and fossils found on the island. Try your hand a fossil hunting at the Fossil Collection Site.

Why don't you take part in a dinosaur island experience with us?



A statue of a Tyrannosaurus at the Goshoura Harbor (next to Shiosai-Kan)

● Fossil Collecting [E-6]



Take part in fossil collecting at a site near the Goshoura Cretaceous Period Museum. Fossils of bivalve and spiral shell creatures are often found here. With a little luck, you may be able to find such rare fossils as ammonites which you can add to the museum collection.

- The Goshoura Cretaceous Period Museum
- Tel: 0969-67-2325
- Activity: App. 60 min
- Rock hammer rental: ¥200



● Ammonite House [E-6]



A fossil ammonite Eupachydiscus as it was found in the earth. The fossil is 60 cm in diameter and is the largest ever found in Kyushu.



- The Goshoura Cretaceous Museum
- Tel: 0969-67-2325 ■ Admission free



● The Goshoura Cretaceous Museum [E-6]



This museum was established when dinosaur fossils were discovered in Goshoura in July 2002. Among the thousand fossil displays you can see teeth of Japan's largest carnivorous dinosaurs, bones of herbivorous dinosaurs, and fossils of Japan's oldest large mammals. Within a five-minute walk from the museum are two fossil collection sites.

- The Goshoura Cretaceous Period Museum in the Goshoura Island Development Center
- Tel: 0969-67-2325
- Open: 8:30~17:00 (admission until 16:30)
- Closed: Mondays (except on national holidays: the next weekday is closed instead) and Dec 29~Jan 3
- Admission: Adult ¥200, High-school ¥150, Children ¥100 (Preschoolers Free)

